



OIML test certificate no. D09-08.24 Revision 0

OIML test certificate no. TC8104 Revision 0

OIML C of C no. R60/2000-DE1-10.09 Revision 1

OIML C of C no. R60/2000-NL1-12.15

NTEP certificate no. 10-056A1

Datasheet: BM8H load cell



- Stainless steel IP68 shear beam load cell
- Hermetically sealed
- Suitable for hopper, platform and pallet scales
- High accuracy

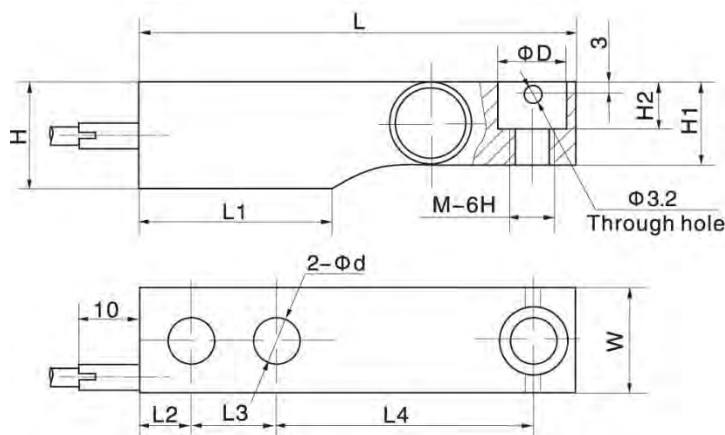


Capacity	Accuracy	Part-Number
500 kg	Cx	BM8H-Cx-500kg-3B-A1
1 t	Cx	BM8H-Cx-1t-3B-A1
1.5 t	Cx	BM8H-Cx-1.5t-3B-A1
2 t	Cx	BM8H-Cx-2t-6B-A1
5 t	Cx	BM8H-Cx-5t-6B-A1 ¹

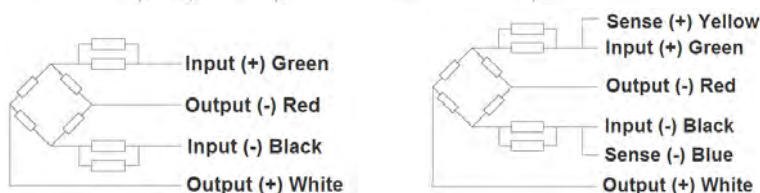
Specification:

		C3	C4
Accuracy class			
Output sensitivity (= FS)	mV/V	2.0 ± 0.02	
Maximum capacity (E _{max})	t	0.5, 1, 1.5, 2, 5	
	klb	1, 2.5, 4, 5, 10	
Maximum number of load cell intervals (n _{LC})		3000	4000
Ratio of minimum LC verification interval $Y = E_{max} / V_{min}$		10000	15000
Combined Error	%FS	≤ ± 0.023	≤ ± 0.017
Minimum dead load	kg	0	
Safe overload	of E _{max}	150 %	
Ultimate overload	of E _{max}	300 %	
Zero balance	of FS	≤ ± 1.0 %	
Excitation, recommended voltage	V	5 ~ 12	
Excitation maximum	V	18	
Terminal resistance, input	Ω	1000 ± 10	
Terminal resistance, output	Ω	1000 ± 10	
Insulation impedance	MΩ	≥ 5000 (at 50VDC)	
Temperature range, compensated	°C	-10 ~ +40	
Temperature range, operating	°C	-35 ~ +65	
Element material		Stainless steel	
Ingress Protection (according to EN 60529)		IP68	
Recommended torque on fixation bolts	Nm	M12:100	M20:700
ATEX classification (optional)		II1G Ex ia II1C T4	II1D Ex iaD 20 T73°C II3G nL IIC T4

Outline Dimensions in mm (inches)



Capacity	500kg	1.0t(2Klb)	1.5t,2.0t	5.0t
Dimension	(1Klb)	(2.5K)	(4Klb,5Klb)	(10Klb)
L	130.0 (5.12)	130.0 (5.12)	130.0 (5.12)	172 (6.71)
L1	57.1 (2.25)	57.1 (2.25)	57.1 (2.25)	76.2 (3.0)
L2	15.5 (0.62)	15.5 (0.62)	15.5 (0.62)	19.1 (0.75)
L3	25.4 (1.0)	25.4 (1.0)	25.4 (1.0)	38.1 (1.5)
L4	76.2 (3.0)	76.2 (3.0)	76.2 (3.0)	95.3 (3.75)
H	31.8 (1.24)	31.8 (1.24)	35.9 (1.41)	44 (1.72)
H1	26.0 (1.02)	27.95 (1.1)	31.95 (1.26)	40.0 (1.57)
H2	14.2 (0.55)	14.2 (0.55)	14.2 (0.55)	20 (0.78)
W	31.8 (1.23)	31.8 (1.23)	31.8 (1.23)	38 (1.48)
D	20.5 (0.81)	20.5 (0.81)	20.5 (0.81)	30.2 (1.19)
d	13 (0.51)	13 (0.51)	13 (0.51)	20.5 (0.8)
M	M12 1/2-20UNF	M12 1/2-20UNF	M12 1/2-20UNF	M20 3/4-20UNF



Wiring:

Adopt shielded, 4 or 6 conductor cable.

Standard cable length:

3 meter for 500kg ≈ 1t

6 meter for 2t ≈ 5t

Please visit our website WWW.ZEMIC.NL for the most actual information

Nr. 2012.05 BM8H Rev8



Zemic Europe



Leerlooierstraat 8
4871 EN Etten-Leur
The Netherlands
www.zemic.nl

Tel: +31 7650 39 480
Fax: +31 7650 39 481
info@zemic.nl